

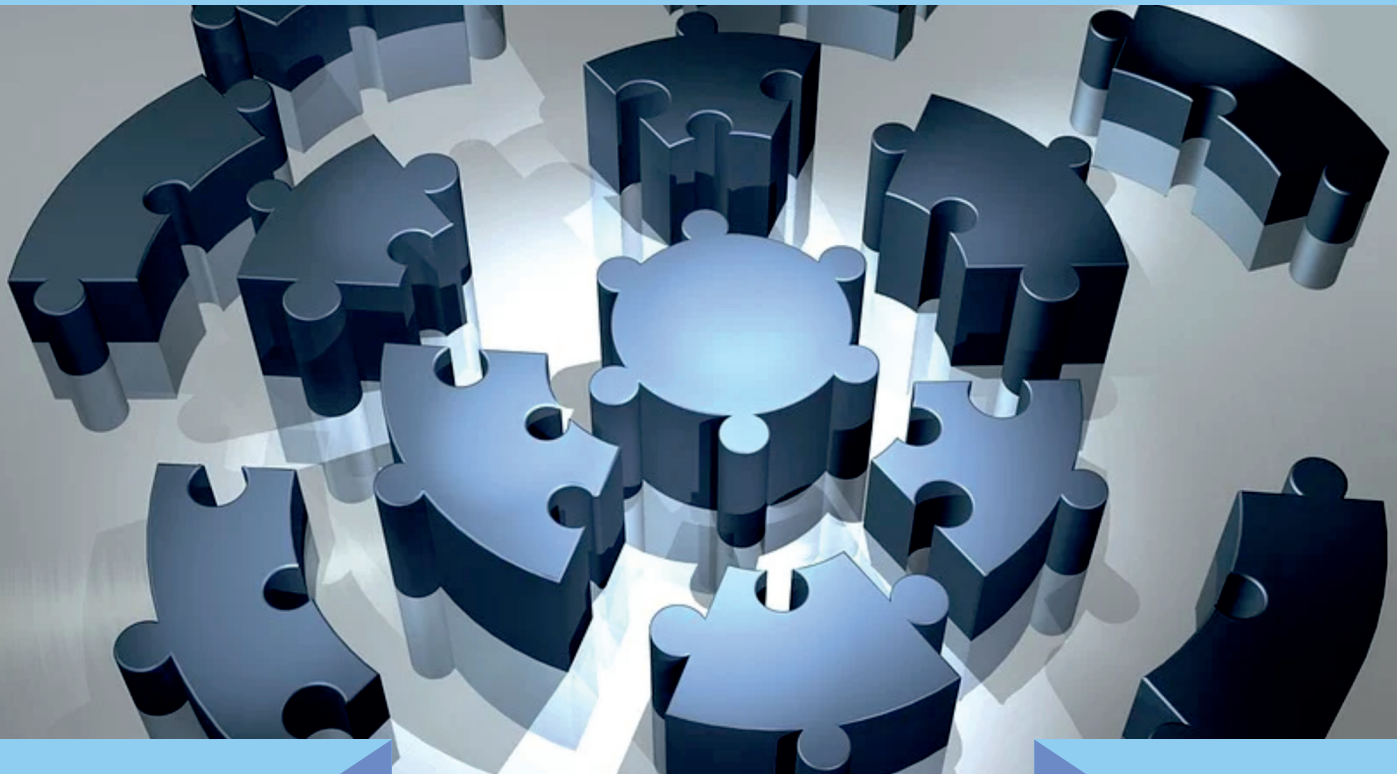


NATIONAL INSTITUTE OF  
TECHNOLOGY, KURUKSHETRA

**MERI**  
GROUP OF INSTITUTIONS



UNIVERSITÄT ZU LÜBECK



25<sup>th</sup> - 27<sup>th</sup> February, 2021

# International Semantic Intelligence Conference (ISIC - 2021)

TECHNICAL SPONSORS



## ABOUT THE CONFERENCE

ISIC is an international platform for the Artificial Intelligence, Machine Learning and the Semantic Web communities. It aims to bring together researchers, practitioners and industry specialists to discuss, advance, and shape the future of intelligent systems by virtue of machine learning and semantic technologies.

It presents a forum to publish cutting edge research results in intelligent applications. Due to many technological trends like IoT, Cloud Computing, Smart Devices, huge data is generated daily and at unprecedented rates. Traditional data techniques and platforms do not prove to be efficient because of issues concerning responsiveness, flexibility, performance, scalability, accuracy, and more. To manage these huge data sets and to store the archives for longer periods, we need granular access to massively evolving data sets. Addressing this gap has been an important and well recognized interdisciplinary area of Computer Science.

Semantic Intelligence refers to filling the semantic gap between the understanding of humans and machines by making a machine look at everything in terms of object oriented concepts as a human look at it. It make sense of data by making it interpretable and meaningful. The focus is on information as compared to process. To whatever application, the data will be put to; it is to be represented in a manner that is machine-understandable and hence human-usable. All the important relationships (including who, what, when, where, how and why) in the required data from any heterogeneous data source are required to be made explicit. The Artificial Intelligence technologies, the Machine Intelligence technologies, and the semantic web technologies together make up the Semantic Intelligence Technologies.

**Note: There are two Best Paper Awards per Track. Each award carries a certificate.**

## ABOUT THE INSTITUTE

MERI (Management Education and Research Institute ) NAAC Accredited, ISO 9001:2015 certified Institute was established in 1995 by Triveni Education and Social Welfare Society, The Institute is Approved by AICTE, Ministry of HRD, Govt. of India and Affiliated to G.G.S. Indraprastha University, Delhi. It is a Higher Educational Institute, which is promoted with a mission to be Premier Institutions, offering Professional Education, Industrial R & D, Consultancy, Technology Cooperation and Training that fosters innovation towards national development. **MERI** offers courses in MBA, BBA, BA(JMC), BCOM (H) and PhD programs are also being offered in collaboration with Foreign Universities.

The Institution has 25 global partnerships with reputed Universities / Institutes. Few of them are mentioned below for students exchange, faculty exchange, collaborative research and development, collaborative international conferences which are integral part of activities in pursuit of global excellence.

University of Paris, Duphine	Hochschule Aschaffenburg University, Germany
I.S.E.P Catholic University of Paris, France	Changsa University of Science and Technology, China
University of Manitoba, Canada	Daeduk University, Daejeon, South Korea
University of Coventry, UK	HKBU, Hongkong
University of Moncton, Canada	Ecole De Management, Normandy
Tianjin Foreign Studies University, Tianjin, China	Bordux School of Management, Bordux France
ESC Rennes School of Business, France	Dyouville College, New York, USA
Network N+I (Group of over 70 Engineering Institutes in France)	Mc Murry University, Texas, USA
University of Central Arkansas, USA	Ansbach University of Applied Science, Germany
Changsha University of Science & Technology, China	University of Electronic Power, Shanghai

## TOPICS

- Semantic Web Engineering
- Ontology-based Data Access
- Multimodal and Multilingual Access
- Machine to Machine Communications and Interoperability
- Knowledge Extraction and Ontology Learning from the Web
- Multimodal and Multilingual Approach to Computing
- Computational Paradigms and Computational Intelligence
- Intelligent Computing and Applications, Case Studies and Tools

- Applications, Opportunities, Challenges
- Reasoning and Intelligent Processing (Semantic Search Paradigms, Semantic Web Mining, Semantic Sentiment Analysis, Semantic Web Services, Visualization, Query Answering, Semantic Information Access)
- Mapping Knowledge bases
- Leveraging Artificial Intelligence in Global Epidemics
- Human-Computer Interaction, any other related topic

## CHIEF PATRON

**Shri I. P. Aggarwal**

Hon'ble Chairman, Triveni Educational and Social Welfare Society, New Delhi



## PATRON

**Prof. Lalit Aggarwal**

Management Education and Research Institute  
New Delhi, India



## CHIEF GUEST



**Prof. (Dr.) A.K. Saini**

Dean, USMS  
GGSIPU, Delhi, India

## GUEST OF HONOR



**Dr. Sarika Jain**

NIT, Kurukshetra,  
Haryana, India

## KEYNOTE SPEAKERS

**Dr. George Fazekas**

Queen Mary University of London  
United Kingdom



**Dr. Bharat Bhargava**

Purdue University, Indiana  
United States



**Dr. Sven Groppe**

University of Lübeck  
Germany



## INVITED SPEAKERS

**Dr. Richard Chbeir**

Universite de Pau et des Pays de l'Adour,  
Anglet, France



**Dr. Srinath Srinivasa**

Professor and Dean (R&D), Web Science Lab,  
IIIT-Bangalore, Bengaluru, India



**Dr. Roberto García**

University in Lleida,  
Spain



**Dr. Ganpathi Mani**

Qualcomm, Inc, San Diego,  
California, USA



**Dr. Vaneet Aggarwal**

Purdue University,  
West Lafayette, IN.



**Dr. Arpan Kumar Kar**

Department of Management Studies,  
IIT Delhi, India



**Dr. Pelin Angin**

Middle East Technical University,  
Turkey



**Dr. Devanjan Bhattacharya**

School of Law and School of Informatics,  
University of Edinburgh, United Kingdom



## PUBLICATIONS

All accepted and presented papers will be included in Proceedings and submitted to CEUR-WS.org for online publication. Post Conference, selected papers (Extended Versions) will be reviewed for possible publication in SCIE / SCOPUS / WoS indexed journals, if authors wish to do the same.

**Indexing:** Post conference, the CEUR-WS proceedings will be made available to the following indexing services: Scopus, Scimago Journal & Country Rank, and Google Scholar; and will also be submitted to DBLP Computer science bibliography for inclusion.

## WORKSHOPS AND TUTORIALS

- **Workshop on Novelties in Open World**  
Organizer: Professor Bharat Bhargava, Purdue University, West Lafayette, Indiana, USA
- **Exploration of Text - Object Relationships with Semantic Web (with special reference to Arabic language)**  
Presenters: Sree Ganesh Thottempudi, Senior Research Scientist, Professor at SRH University - Berlin, Germany
- **Blockchain for IoT and Cyber Physical Systems Security (BICS-2021)**  
Presenters: Roshan Singh, Assistant Project Engineer, Open Source Intelligence Lab, Indian Institute of Technology, Guwahati, India & Pranav Kumar Singh, Assistant Professor, Department of Computer Science and Engineering, Central Institute of Technology Kokrajhar, India
- **Validating RDF Data using Shapes**  
Presenters: Jose Emilio Labra Gayo, Associate Professor, University of Oviedo, Spain

## HIGHLIGHTS OF THE CONFERENCE

- 4 top-shot researchers as advisory
- 13 special issues in indexed journals for extended papers of ISIC 2021
- 21 members being chairs in main conference organization
- 200+ Program Committee members from 40 different countries
- High gender diversity with 32% women

### ORGANIZING SECRETARY

**Prof (Dr.) Deepshikha Kalra**  
MERI, Delhi, India

**Prof. Ritu Aggrawal**  
MERI, Delhi, India

**COVID-19 Announcement ISIC 2021 will run in hybrid mode (Face-to-face and remote).**

### CONFERENCE VENUE

**Management Education and Research Institute**  
**52-55, Institutional Area, Janakpuri, New Delhi - 110058**

For Workshops and Tutorials Contact: **Dr. Ashwin Makwana - 9408151969 & Dr. Archana Chougule - 09765660044**

Contact Details: **Prof. (Dr.) Deepshikha Kalra - 8800170204 & Prof. Ritu Aggarwal- 9818276740**

Mail us: **mericonference@meri.edu.in** • For Further Details: **meri.edu.in/meri/**

Conference Website: **<https://www.ifis.uni-luebeck.de/~groppe/isic>**